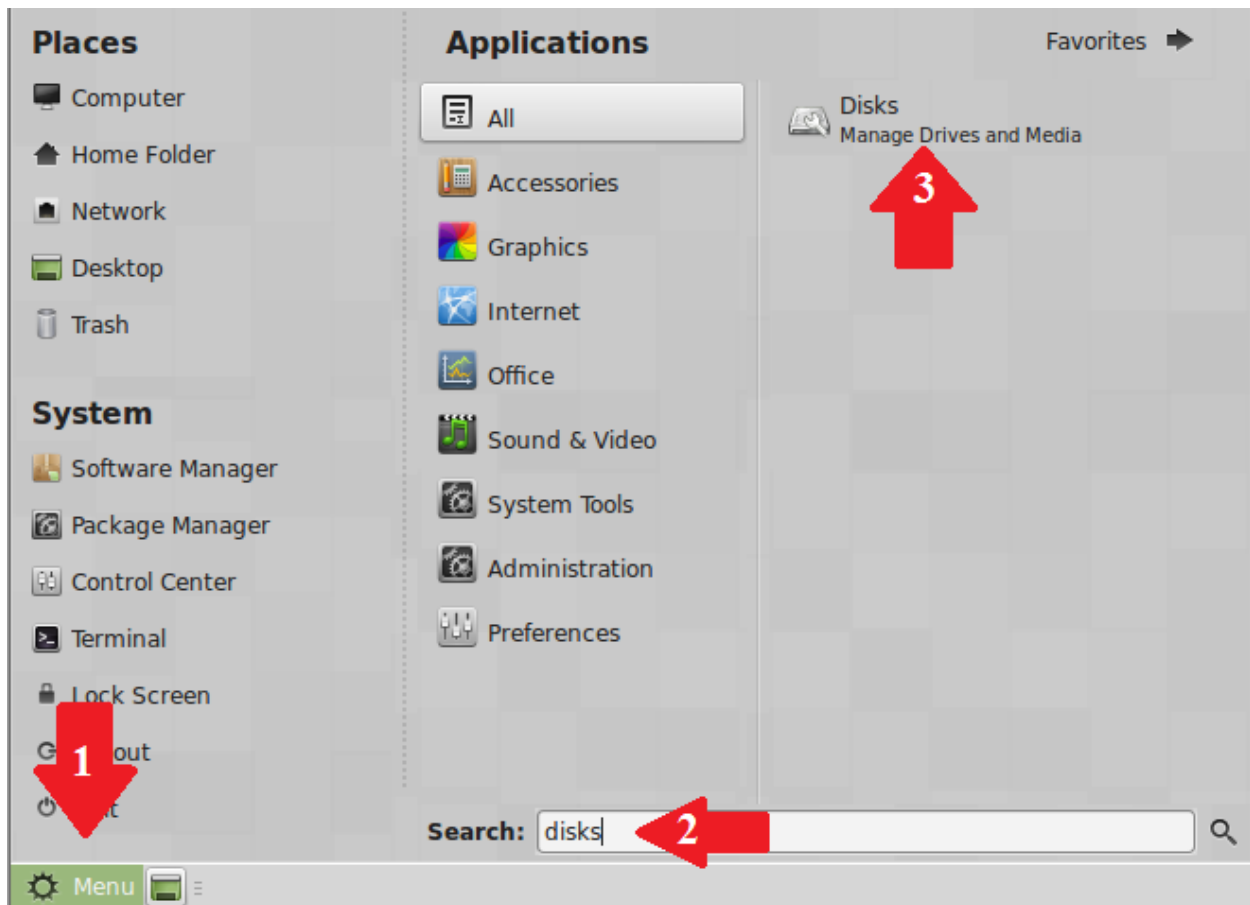


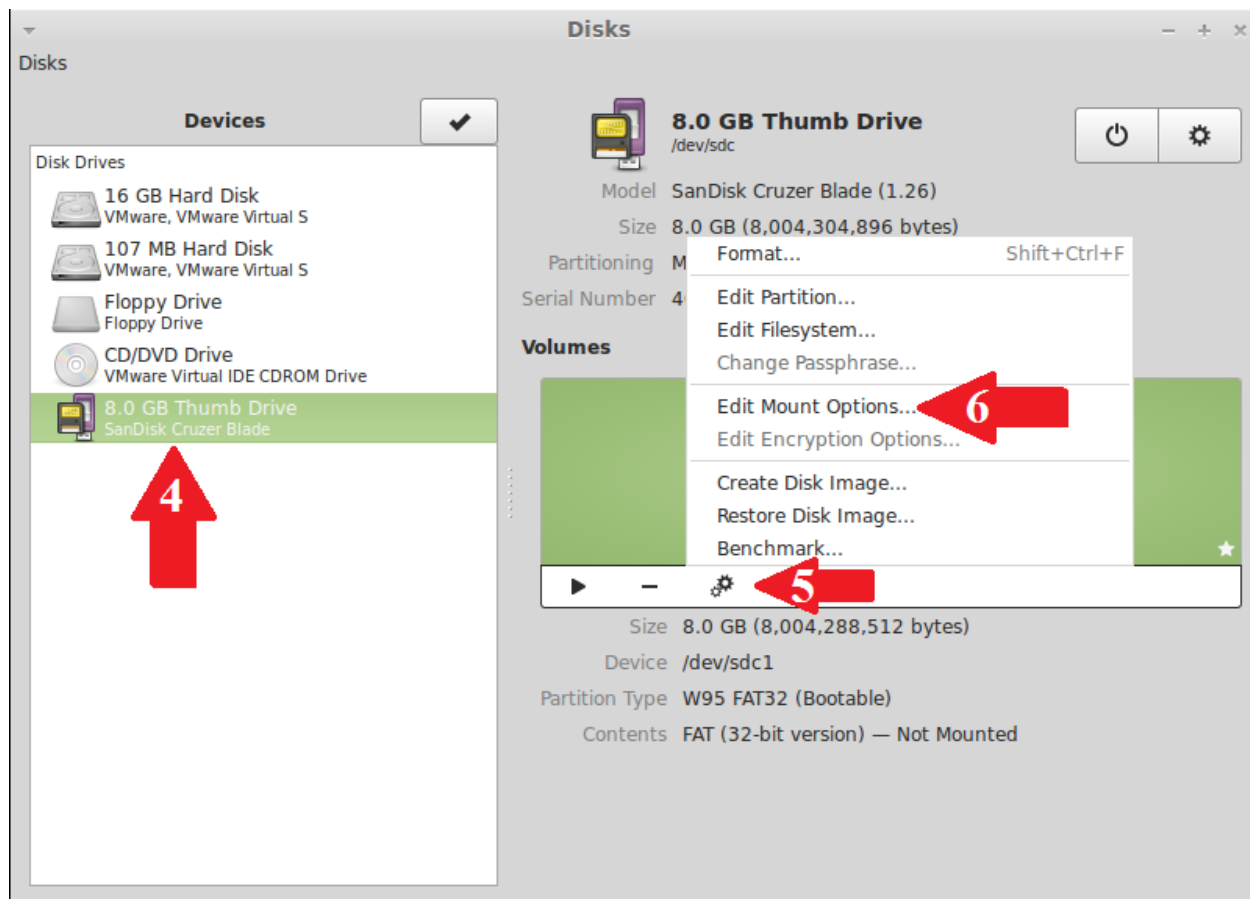
# Disable Device Auto-Mounting in Linux Mint 17 in 10 Easy Steps

## Before You Begin:

Attach the Device to have auto-mounting disabled, i.e., USB flash drive, to the virtual machine



1. Click Menu
2. Type 'disks'
3. Click Disks – Manage Drives and Media




4. Click the Device under Devices to have auto-mounting disabled

5. With the device selected, click the Gears icon

6. Select Edit Mount Options

**Mount Options**

**Automatic Mount Options** ☒ ON 

Mount Options ☐ Mount at startup

☐ Show in user interface

☐ Require additional authorization to mount

Display Name

Icon Name

Symbolic Icon Name

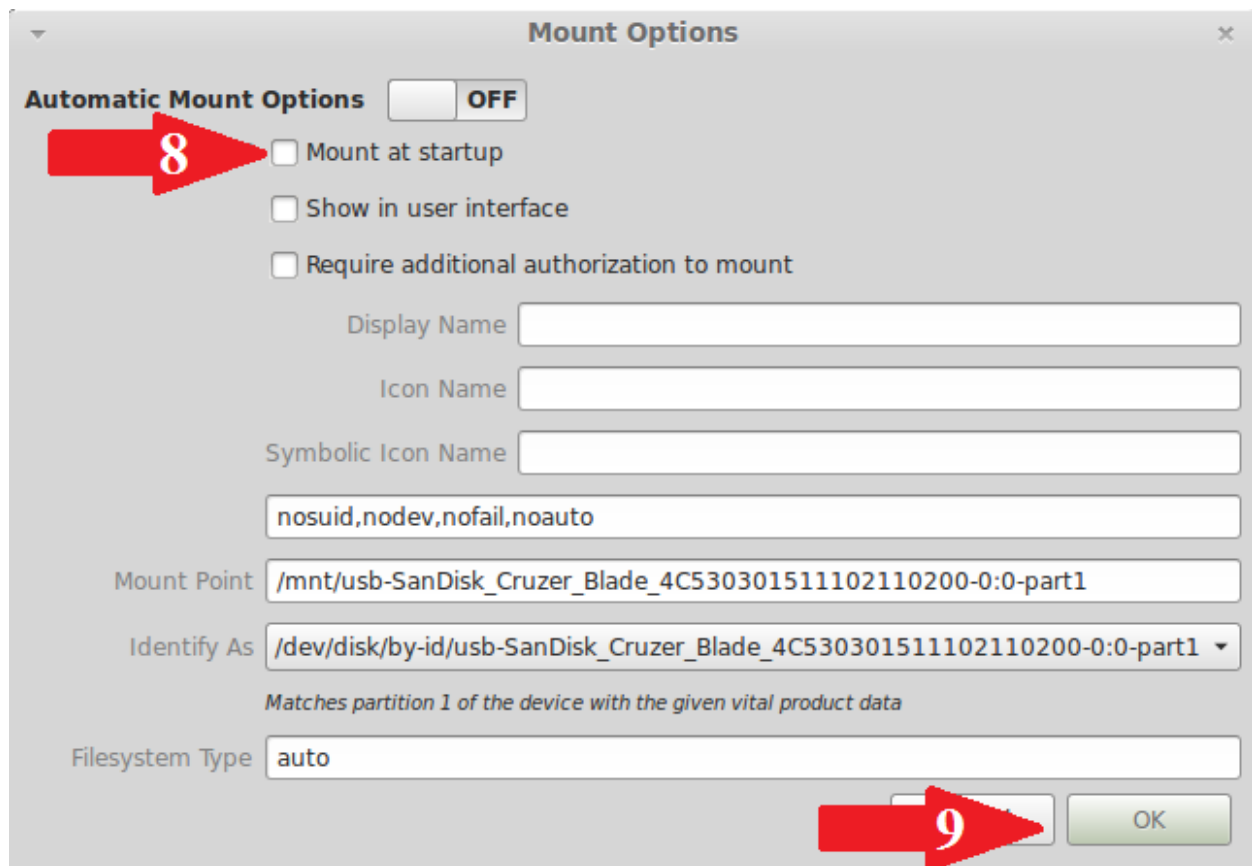
Mount Point

Identify As

*Matches partition 1 of the device with the given vital product data*

Filesystem Type

7. If the Mount Options appear grayed out, click ON. If the Mount options are not grayed out and the ON option is not visible, proceed to 8.



8. Make sure the box next to Mount at startup is NOT checked; if checked, click the box to uncheck the option

9. Click OK

10. With the device still attached, reboot Linux